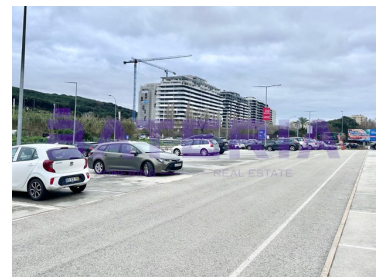
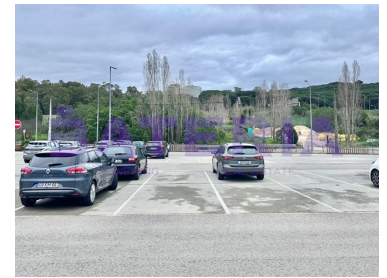
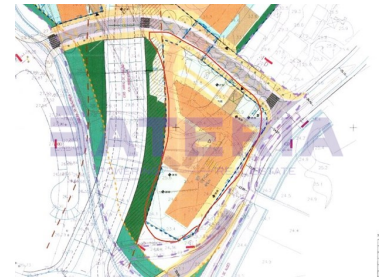




Algés, Linda-a-velha e Cruz Quebrada-dafundo - Urban land



20115 **4485**
Area (m²) Land Area (m²)

5 300 000 €
(EUR €)

Land for Commerce or Services in Mirafleres

50%/50% sharing with all agencies

Exclusive Opportunity Mirafleres – Land for Commerce and Services

We present a unique opportunity for real estate investors and developers: a premium plot of land located in Mirafleres.

Terrain Features:

Land Size: 4,485 m²

Building Implantation Area: 4,460m²

Gross Permitted Construction Area: 20,115 m² (8,715m² Services/Commerce + 11,400m² Parking)



Francisco Garcia

+351914744345 ²

francisco.garcia@bateria.com.pt

T +351 932283742 ² · E geral@bateria.com.pt
Rua Abranches Ferrão, nº 11-B, 2º andar, 1600-296 Lisboa
AMI 22357

¹ (Call to national fixed network) | ² (Call to national mobile network)



Location of Excellence:

Located in one of the most dynamic and sought-after areas of Oeiras, this land benefits from:

Proximity to Lisbon, with excellent access to the A5 and CRIL.
Insertion in a vibrant urban context, with high residential and business density.
Privileged views over Monsanto Park and the Tagus River.
Unmatched Potential:

With a vast authorized construction area, the land is ideal for:

Corporate buildings or business centers.
Shopping centres or retail spaces.
Service infrastructures, such as hospitals, hotels or educational units such as schools.

*At the moment, a contract for the operation of the car park is in force.

Why Invest?

The strategic location and versatility of this land offer a huge return on investment in one of the most valued real estate markets in Greater Lisbon.

Contact us for more information or to schedule a visit.

Property Features

- Energetic certification: Exempt



Francisco Garcia

+351914744345 ²

francisco.garcia@bateria.com.pt

T +351 932283742 ² · E geral@bateria.com.pt
Rua Abranches Ferrão, nº 11-B, 2º andar, 1600-296 Lisboa
AMI 22357

¹ (Call to national fixed network) | ² (Call to national mobile network)