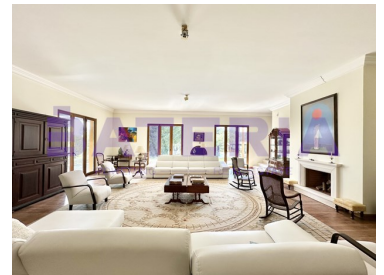




## Santo Estêvão - Farmhouse



 8  
Bedrooms

 8  
Bathrooms

 747  
Area (m<sup>2</sup>)

 23000  
Land Area (m<sup>2</sup>)

  
Garage

**1 750 000 €**  
(EUR €)

### Villa T8 in Santo Estêvão

Estate in Santo Estêvão, in Mata do Duque 2.

Property with 23,000m<sup>2</sup> and 747m<sup>2</sup> of construction area of which 523m<sup>2</sup> of gross private area, consisting of:

- a) main house (7 bedrooms, 6 of them suites, full bathroom, kitchen with pantry and technical and laundry area, dining room and 2 living rooms);
- b) Pool house (1 living room with kitchen, 1 bedroom and 1 bathroom, with outdoor dining area and barbecue);
- c) garage building;



**Rita Garcia**

+351966734999 <sup>2</sup>

rita.garcia@bateria.com.pt

**T +351 932283742 <sup>2</sup> · E geral@bateria.com.pt**  
**Rua Abranches Ferrão, nº 11-B, 2º andar, 1600-296 Lisboa**  
**AMI 22357**

<sup>1</sup> (Call to national fixed network) | <sup>2</sup> (Call to national mobile network)



d) two lakes.

To live, spend weekends or holidays, this is the ideal place to enjoy the quiet of the countryside, close to the golf course and close to the village of Santo Estevão, where you will find all kinds of shops, services and restaurants.

Book your visit now.

## Property Features

- Garage
- Storage / utility room
- Guest cottage
- Built year: 2005
- Views: Countryside views, Pool view, Garden view, Lake view
- Energetic certification: D



**Rita Garcia**

+351966734999 <sup>2</sup>

rita.garcia@bateria.com.pt

**T +351 932283742 <sup>2</sup> · E geral@bateria.com.pt**  
**Rua Abranches Ferrão, nº 11-B, 2º andar, 1600-296 Lisboa**  
**AMI 22357**

<sup>1</sup> (Call to national fixed network) | <sup>2</sup> (Call to national mobile network)